

FIGURE 13 SLAB/EAVE JUNCTION DETAIL

## WINDOW DETAILS

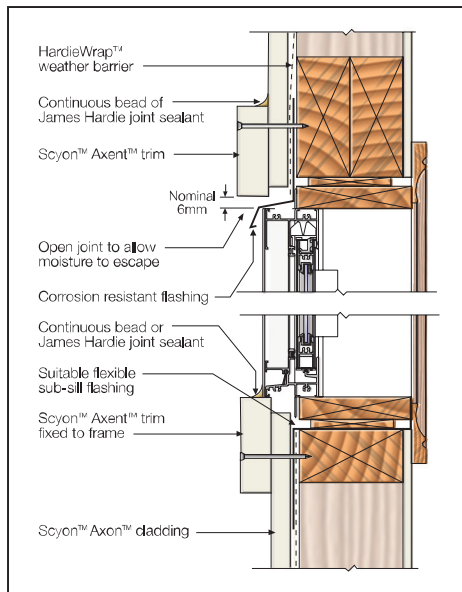


FIGURE 14 WINDOW HEAD AND SILL - TRIM

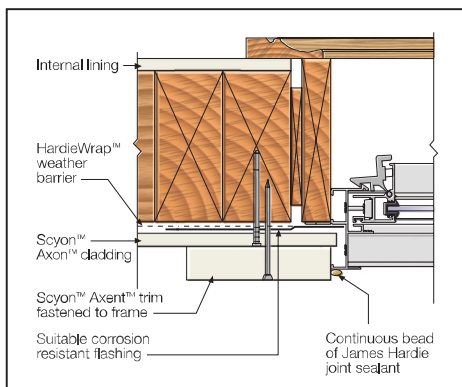


FIGURE 15 WINDOW JAMB - TRIM

## EXTERNAL CORNER DETAILS

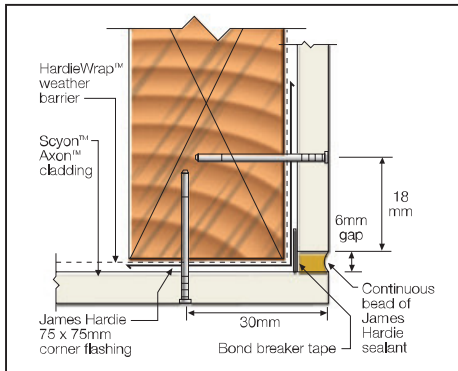


FIGURE 16 SEALANT FILL OPTION

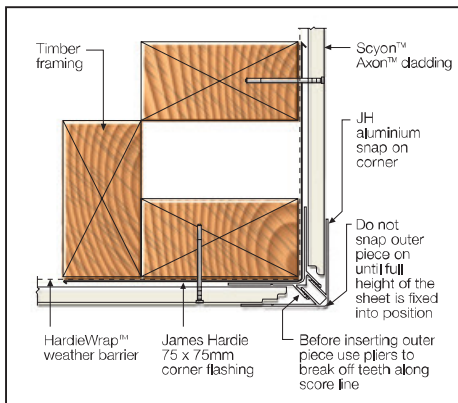


FIGURE 17 SNAP ON CORNER OPTION

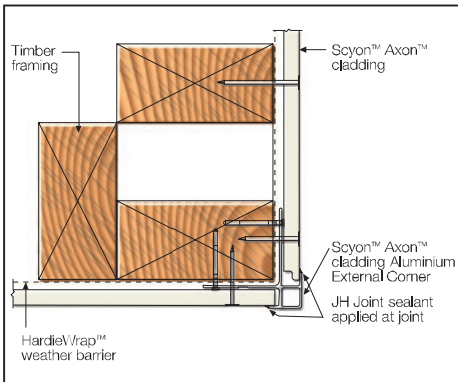


FIGURE 17B ALUMINIUM EXTERNAL CORNER

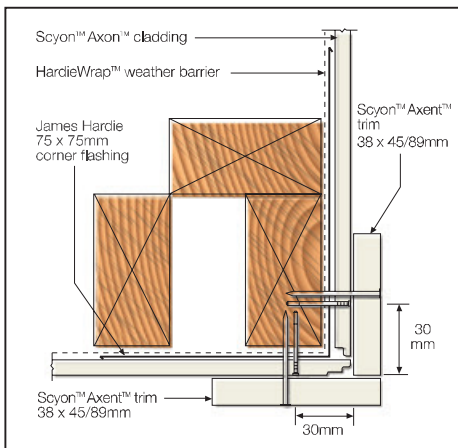


FIGURE 18 TRIM CORNER OPTION

## INTERNAL CORNER DETAILS

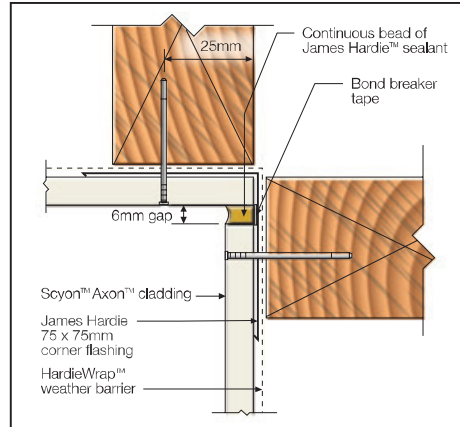


FIGURE 19 SEALANT FILL OPTION

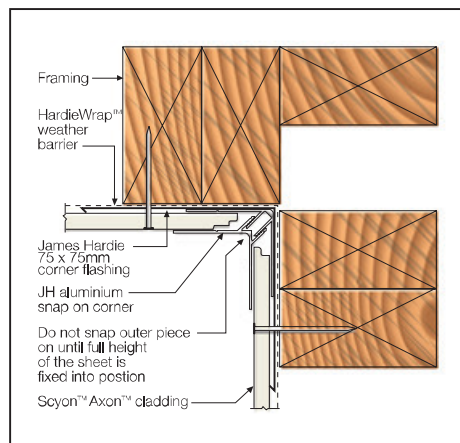


FIGURE 20 SNAP ON CORNER OPTION

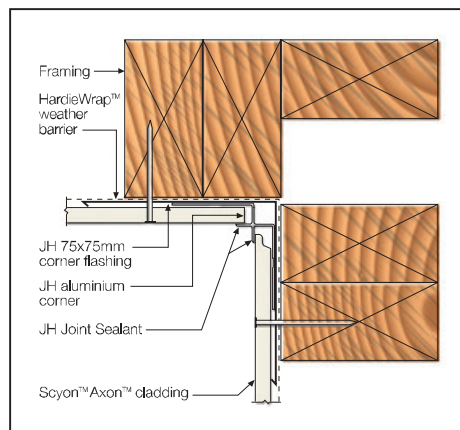


FIGURE 20B ALUMINIUM INTERNAL CORNER

CAD details are available at [www.accel.com.au](http://www.accel.com.au)

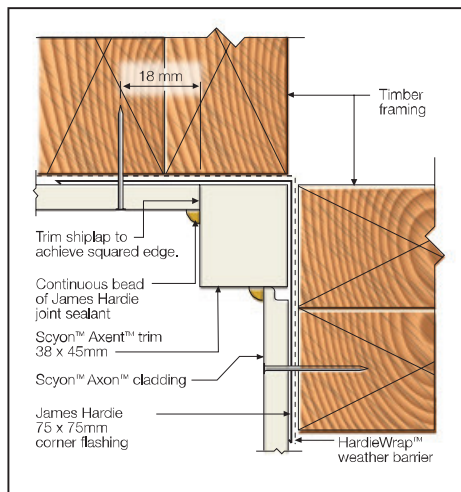


FIGURE 21 TRIM CORNER OPTION

## JUNCTION DETAILS

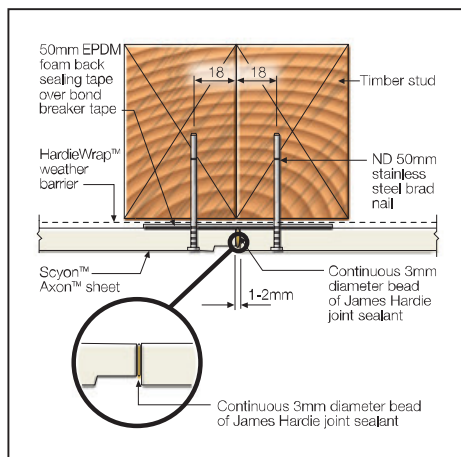


FIGURE 22 VERTICAL BUTT JOINT

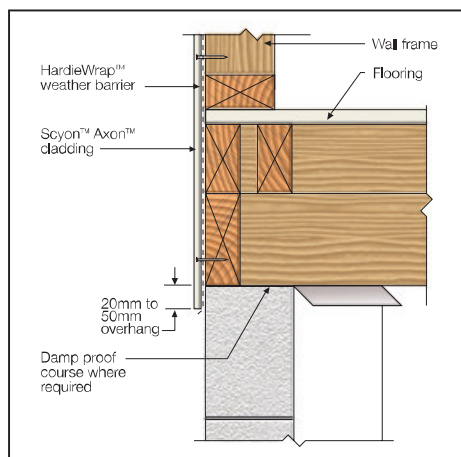


FIGURE 23 LOWER FLOOR JUNCTION

The Scyon™ Axon™ cladding must not continue over a floor junction or where excessive movement or creep will occur, see Figure 24.

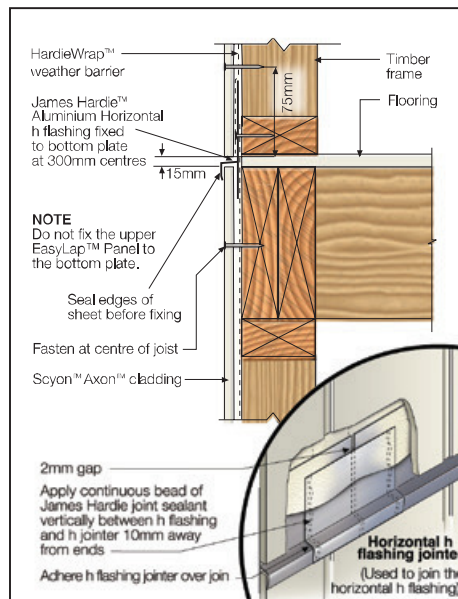


FIGURE 24 UPPER FLOOR JUNCTION/HORIZONTAL JOINT

NOTE: Join the James Hardie 9mm Aluminium Horizontal h flashing on intermediate studs and not off stud or behind sheet joints.

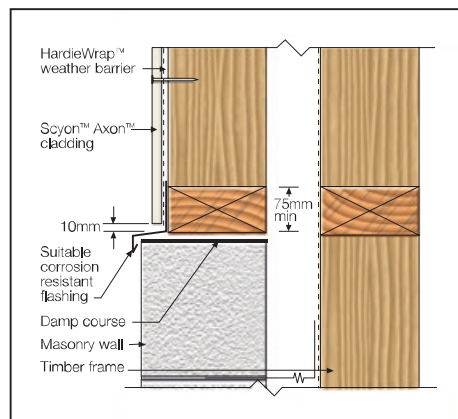


FIGURE 25 HORIZONTAL JUNCTION 1

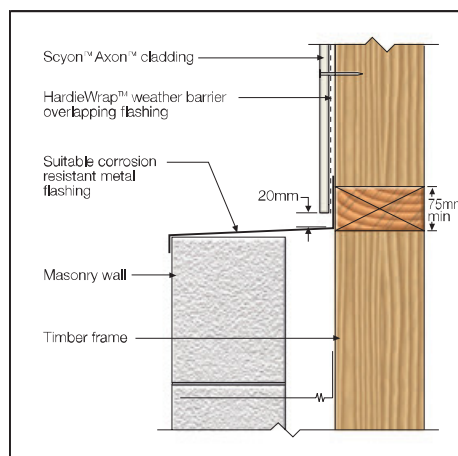


FIGURE 26 HORIZONTAL JUNCTION 2

## FINISHING Sealant

Application and use of sealants must comply with manufacturer's instructions. Sealants, if coated, must be compatible with the paint system. James Hardie recommends the use of James Hardie™ joint sealant, which is a paintable polyurethane sealant.

## Painting

Scyon™ Axon™ cladding is primed and ready for painting. All sheets must be dry before painting.

Refer to the project specification for paint requirements. Scyon™ Axon™ cladding must be painted within 3 months of being fixed. In areas within 1km of a coastal area or corrosive environment, the Scyon™ Axon™ cladding must be painted immediately after fixing sheets to minimise contamination build up on the heads of the fasteners, as it may lead to fastener corrosion.

James Hardie recommends the application of two coats minimum of a quality acrylic paint over the pre-primed boards in accordance with the paint manufacturer's specifications. If the screw countersunk option is used, it's recommended that any sanded patches be primed before applying the two final coats. Some environments require special coatings including coastal areas. Painting selection and specifications are dependant on the paint chosen. Refer to the paint manufacturer for further information and details of their warranty.

## Staining

Some paint manufacturer's such as Cabot's and Watty offer stain systems that they have tested with James Hardie fibre cement products. For a stained look, contact the James Hardie Engineering Solutions team on 13 11 03.

## MAINTENANCE

The extent and nature of maintenance will depend on the geographical location and exposure of the building. As a guide, it is recommended that basic normal maintenance tasks shall include but not be limited to:

- Washing down exterior surfaces every 6-12 months\*
- Periodic inspections should be made to ensure fasteners are adequately securing the sheets to framing.
- Re-applying of exterior protective finishes\*
- Maintaining the exterior envelope and connections including joints, penetrations, flashings and sealants that may provide a means of moisture entry beyond the exterior cladding.
- Cleaning out gutters, blocked pipes and overflows as required.
- Pruning back vegetation that is close to or touching the building.

\*Refer to your paint manufacturer for washing down and recoating requirements related to paint performance.